



BidetKing

Please save this manual and place in easily accessible location.
Do not attempt to service this appliance yourself.
Doing so will void warranty.

Want 1 Year Supply of Ion Filters For Your Bidet Seat?

1) Follow Us On

**@BidetKing
On Instagram**

OR

**@BidetKing.com
on TikTok**



**2) Post a photo or video of your new
Crown and tag @bidetking**

**3) We'll send you 2 free ion filters to
Protect Your New Bidet Seat**

Table of Contents

01	General Information	
	Safety Information - Warning	4
	Important Notes	6
	Product Features	8
	Product Parts	10
02	Installation	
	Before Installation	14
	Product Installation	15
	Remote Installation	17
	Trial Operation	18
03	Operation	
	General Operation	19
	Expert Mode	24
04	Technical Information	
	Maintenance	28
	Error Codes	30
	Specifications	31
	Comparison Chart	32
	Dimensions	33
	Warranty	34

Safety Features

Warning

Risk of electric shock, fire, personal injury, property damage or product damage when violating the instructions.

- Do not disassemble, modify or repair the product yourself.
- Do not plug or touch the power plug with wet hands.
- Do not pour excessive water onto the products or power plug.
- Do not use if the power plug, cord, or outlet are damaged.
- This product should be used with a grounded outlet.
- Only for use with 110/120V outlets
- Do not place cigarettes or flammables near the product. Do not litter into the product.
- Do not use industrial water, or gray water for the supply
- Do not plug in until the unit is completely installed
- The unit should be serviced by an authorized or qualified technician if it has a damaged power cord.
- Make sure that drying opening area is not blocked.
- Unplug first before cleaning the unit.
- Do not use the product in locations exposed to excessive moisture.
- Do not use the product if it has been submerged in water. Unplug the unit immediately and call the service center.
- This unit is not intended for use by persons (including children and seniors) with reduced physical, sensory, or mental capabilities, or lack of experience and knowledge.
- Do not connect the bidet to a hot water supply. Only supply it with a cold water connection.

Safety Information

Caution

Risk of electric shock, fire, personal injury, property damage or products damage when violating the instructions.

- Do not use bleach, chlorine, ammonia, alcohol or other harsh chemicals based cleaning products on the bidet body. Over time, these chemicals will corrode and/or discolor the plastic surfaces and lead to cracks or damages not covered under the warranty.
- To clean, use warm and mild hand soap and/or a natural disinfectant like diluted vinegar and wipe with a soft towel. If chemical cleaners are used, be sure to immediately wipe down the surface with warm water to remove any residue.
- Do not stand on the top of or place any heavy objects onto the seat cover.
- Do not open/close the lid/seat with excessive force.
- Do not lean against the lid when seated with excessive force.
- Do not press the buttons using excessive force.
- Do not use any aerosol(spray) products near by. This may result in discoloration of the bidet body.
- Do not pull out the bidet hose using excessive force.
- For children and seniors who may have difficulties with adjusting temperatures or those with sensitive skin or impaired heat sensitivity, set the temperature of the wash spray and seat to "low" or "off" to prevent burning.
- If the unit will not be used for a long period of time, unplug the power cord, and close the main water supply valve.
- Do not use the unit if it is not working properly.
- Make sure the bidet is fully locked into the mounting plate before using.
- After the installation, make sure to check all water supply connections for leaks. Rubber washers should be in place for the water connection hoses and T-valve
- Do not store or place the unit upside down.
Children should be supervised to ensure that they do not play with the unit.

Important Notes

Instant Heating and High Spray Pressures

- When using the Rear or Rear+ modes at higher spray pressures, the temperature of the water spray will be reduced due to higher output volume. This is not a malfunction.
- This will be most noticeable in colder climates.

Body Lotions, Creams and Oils

- If the seat is heated, do not sit after applying body lotion, creams, or oils. When combined with the heated seat surface, this can lead to discoloration of the plastic and is not covered under the warranty.

Cleaning The Bidet Body

- Do not use bleach, chlorine, ammonia, alcohol, or other harsh chemical based cleaning products on the bidet body. Over time, these chemicals will corrode and/or discolor the plastic surfaces and lead to cracks or damages not covered under the warranty.
- To clean, use warm water and mild hand soap and/or a natural disinfectant like diluted vinegar and wipe with a soft towel. If chemical cleaners are used, be sure to immediately wipe down the surface with warm water to remove any residue.

Water Supply Hose and Power Cord

- Be careful not to drop any chemical cleaners on the water supply hose or power cord.
- The included water supply hose should be used with the bidet. Avoid re-using any old hoses.

Water Filter

- If the water supply is known to contain rust or sediment, it's important to use an inline water filter (not included) with the bidet to prevent internal damage.

Toilet Bowl Flatness

- The bidet seat is designed to accommodate most toilets. However, if the toilet bowl is not perfectly flat, the rear of the seat may be raised above the bowl surface and not supported.
- This may cause excessive strain on the seat and bidet body, and may cause damage such as external cracks. Please contact us for additional seat pads if this is the case.

Product Features

Ceramic Water Heating Technology

- Instant, ceramic heating system provides endless water water for cleansing.

IPX5 Waterproof

- Bidet main unit is designed with IPX5 waterproof ability for safety.

Rear/Front wash

- Adjustable temperature, position, pressure, pulsation and oscillation settings.

Rear+

- A more concentrated rear spray that can stimulate as it cleanses. May help constipation for some users.

Aerated Wash

- A specially designed nozzle tip structure generates aerated spray for a more comfortable cleansing experience.

Stainless Steel Nozzle

- A fully stainless steel nozzle resists rusting and contamination for better hygiene.

Multicolored, LED Nightlight

- Change the color of the in-bowl LED nightlight to match your style or mood.

PARTY MODE™

- Delight your guests with a 30 second disco party in your toilet bowl. Keep the lid up for best results!

Product Features

2 Energy Saving Modes

- Offers 2 different energy saving modes to maximize energy savings.

2 Nozzle Cleansing Modes

- Offers 2 different nozzle cleansing modes to enhance hygiene.

Nozzle/Dryer Protection Cover

- Cover protects the nozzle and dryer port from contamination when using the toilet.

Automatic Leveling Seat

- An automatically adjusting seat leveling system helps keep the seat even, when the toilet bowl is not perfectly flat.

Radio Frequency Remote

- Wireless remote control uses radio frequency to communicate with the seat, resulting in a longer range and less interference.

User Presets

- Water temperature, seat temperature, spray pressure, and nozzle position settings can be saved under 2 user presets.

PARTY MODE™

Love entertaining? Can't get enough LED's? Miss the disco days?

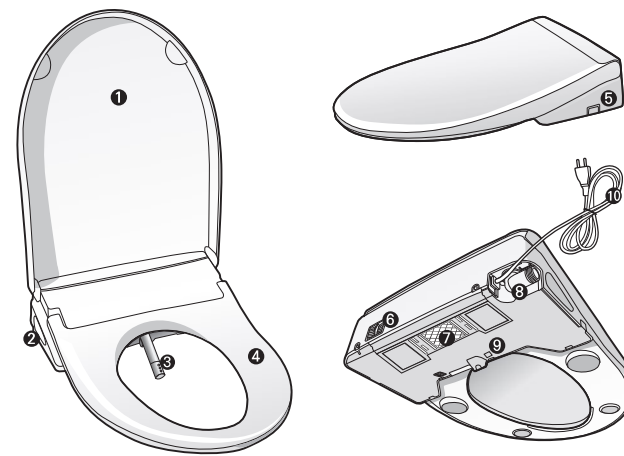


- Delight your kids and guests alike with the BidetKing Crown's **PARTY MODE™**
- With nobody seated, press and hold NIGHTLIGHT for 3 seconds to activate a 30 second disco routine!
- For best results, leave the lid up.



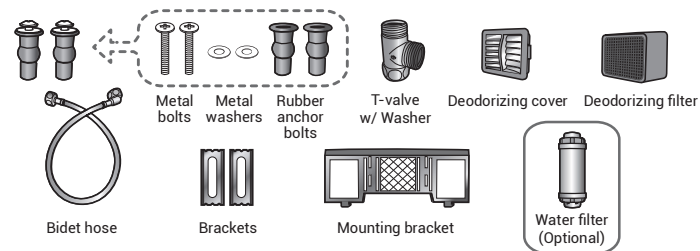
09

Product Parts



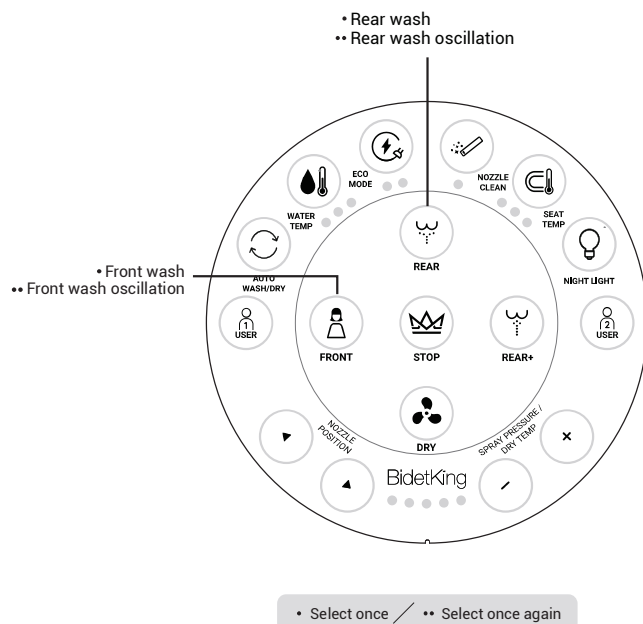
- | | | |
|---------------|-------------------|---------------------|
| ① Lid | ② Auxiliary panel | ③ Nozzle |
| ④ Seat | ⑤ Release lever | ⑥ Deodorizer outlet |
| ⑦ Catch plate | ⑧ Water inlet | ⑨ Night light |
| ⑩ Power cord | | |

Installation Parts



10

Control Panel



Parts for Remote Control



Remote control



Remote control bracket



AA battery X 3

Before Installation

! IMPORTANT NOTES

Do not plug in the electrical cord until the unit is completely installed.

- Read these tips first before installation.
- Every bidet is tested at the factory with pure, distilled water before it is packaged and shipped. As a result, you may find residual water in the house, or the bag around the bidet seat. Do not be alarmed!
- We do not sell used bidet seats. Ever.
- Tools needed: Phillips head screwdriver, wrench, towel, teflon tape (maybe)
- The bidet seat is compatible with most residential toilets. Certain compact style toilets with 1 piece designs or curved tanks are not compatible. Please contact us if you have difficulty with installation.
- If your toilet has a skirted design (hidden trapway with no access to the underside of the bowl), then you may need an alternative t-valve that will connect to the shut-off valve at your wall, instead of underneath the toilet tank. Please contact us if you need this valve.
- Teflon tape can be used on metal to metal threaded connections, but should not be used on plastic threads unless a tiny leak is found.
- Make sure the rubber washer at the top of the t-valve is present and seated correctly with the smaller side pointing up towards the toilet tank. Do not install the t-valve without the washer present.
- 99% of leaking t-valves are due to either a missing or improperly seated washer, or not threading the top of the t-valve correctly.
- Each end of the bidet supply hose should also have a rubber washer present. Make sure these are seated properly and straight before tightening.
- Firm hand tightening is generally enough. Be careful not to over-tighten as this can damage the threads. Avoid using a wrench to tighten unless absolutely needed.

Let's Get Started

Scan the QR code with your smartphone's camera for help with installation.

or visit:
<https://bidetking.com/pages/crown>



Product Installation

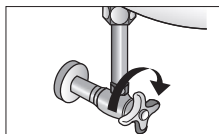
1. Remove The Existing Seat From The Toilet

- Release the nuts and then remove the seat and cover.
- Keep the removed seat, cover and nuts in a proper place in case of using them again.



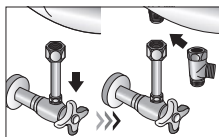
2. Close The Shut-Off Valve, And Then Flush The Tank

- Make sure the water supply is OFF before moving to the next step.
- Flushing the toilet will empty the tank. If the tank does not refill, then the water supply is OFF.



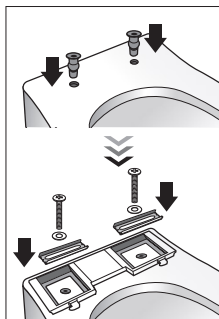
3. Disconnect The Toilet Hose And Install The T-valve

- Slowly disconnect the hose. Use a towel to catch residual water left in the hose when it spills on the floor.
- Connect the t-valve to the toilet fill valve under the tank (not at the wall). Make sure the rubber washer at the top of the t-valve is present and seated correctly with the smaller side pointing towards the toilet tank. Do not install the T-valve without the washer present.



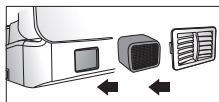
4. Install The Catch Plate

- Wet the rubber anchor bolts with water and firmly insert them all the way down into the mounting holes on the top of the toilet. Use the bolts to help push them down.
- Place the mounting plate over the rubber anchor bolts on the toilet.
- Place the brackets flat side down on the mounting plate over the rubber anchor bolts. Insert metal mounting bolts through the washers, holders and rubber anchor bolts; use a screwdriver to screw in the mounting bolts and tighten.
- If the toilet bowl is not suitable to use mounting anchor bolts, contact the local dealer where you bought your product for more assistance.



5. Insert The Deodorizer Filter

- If not already pre-installed, insert the deodorizer filter into the back of the unit and then affix the plastic cover.

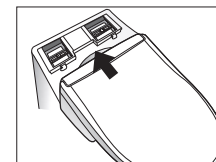


13

Product Installation

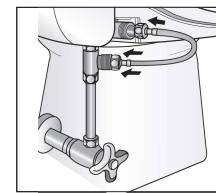
6. Slide The Bidet Seat Into The Catch Plate

- Align the bidet seat to the catch plate and slide back firmly with two hands until it locks into place with a click.
- If the front of the seat does not align with the front of the bowl, press and hold the release lever near the electrical cord and slide the seat off the plate. Loosen the screws adjust the plate forward or backwards, re-tighten, and then slide the seat back into the plate.



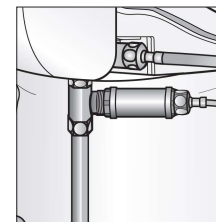
7. Connect The Bidet Hose To The Bidet Seat

- Rotate the inlet towards the rear for better access. Connect the angled end of the supply hose to the bidet inlet.
- For best results: first pull back on the tightened nut and press the rubber seal at the end of the hose against the inlet ensuring that it's straight. Then carefully tighten the nut, being careful not to cross-thread.
- Repeat on the straight end of the hose that connects to the t-valve.



※ Bidet Filter Installation (optional)

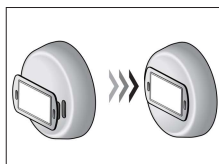
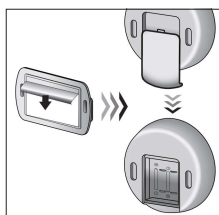
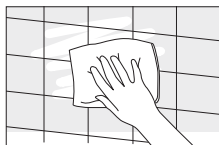
- If your water supply is especially hard, on well water, or known to contain sediment or rust, it's highly recommended to install an inline water filter to protect the bidet seat. These are available at bidetking.com
- Filters are installed between the t-valve and bidet supply hose and should be replaced every 4-6 months.
- Failure to replace the filter on time may result in water contamination, supply congestion, or filter breakage.



14

Remote Installation

1. Find a place visible and reachable from the toilet and clean the space thoroughly before attaching the bracket.
2. Peel the adhesive protection film and attach the bracket on the wall.
3. ****Wait to perform this step until you are ready to plug in the bidet seat.****
Insert the (3) AA batteries in the correct orientation and then secure the cover by sliding it into place.
4. Batteries should be inserted within 5 minutes of plugging in the bidet seat for an automatic pairing.
5. Allow the wall bracket adhesive to rest for at least one minute before attaching the remote control.



If the automatic pairing between the remote and bidet seat has failed, follow the steps below:

- Plug in the bidet seat.
- The nozzle comes forward and goes backward, then the melody plays.
- Insert the batteries.
- Press any button to complete the pairing. Melody is played to identify pairing completion.

Replace all batteries at the same time.
Do not mix old and new batteries.

※ Caution For Pairing

- Be sure to proceed in the order of pairing method. If the order is reversed during pairing, remove the remote control batteries and product power cord, wait 50 seconds, and start again from the beginning.
- To automatically pair the remote to the seat, install the batteries into the remote within 5 minutes of plugging the seat into the power outlet.
- This product is an RF-type remote control with its own unique number assigned to each product. There is little chance of confusion if two or more remote control bidet seats are installed at the same place. In this case, contact the local dealer where you purchase your seat for more assistance.

Powering On

1. Turn On The Water Supply

- Slowly open the shut-off valve at the wall and check for leaks. You should hear the toilet tank fill up.

2. Check All Connections For Leaks, Including T-valve and Hose Connections

- If leaks are found, close the shut-off valve immediately and inspect all connections. Make sure they are firmly tightened, threads are straight and all washers in place and seated properly. Teflon tape can be used where necessary.

3. Plug In The Bidet Seat To The Electrical Outlet.

- Make sure your hands are dry.
- Within 5 minutes, insert the batteries in the remote control.

4. Start Up Sequence

- The bidet seat will conduct a short start up sequence and you may see the nightlight blink and nozzle extend and retract.

Operations

Occupied Seat Sensor

- Sit on the seat and ensure skin contact on the seat sensor.
- The capacitive seat sensor detects skin contact, not weight, so make sure there's no clothing in the way.
- The seat will not spray or function unless the seat sensor is occupied.
- Leaving the seat during use will stop any active operation.

Stop

- Press the STOP button to stop any active washing or drying cycle.

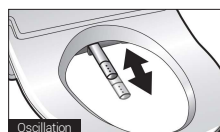
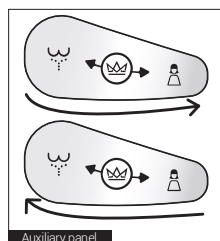
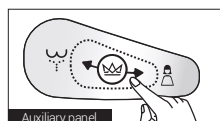
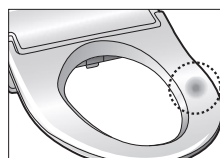
REAR / FRONT / REAR+ / Oscillation

Remote Control

- Press a wash button once to start a wash cycle. The nozzle will clean itself before and after every wash cycle so you may hear water dripping in the bowl.
- During a REAR or FRONT wash, press the same wash button again to make the nozzle oscillate back and forth. This gives a wider cleaning area. Oscillation is not available in REAR+ mode.

Side Auxiliary Panel

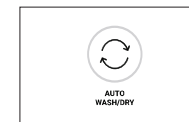
- Swipe finger toward the front to initiate a front wash. Swipe finger toward the front again to initiate oscillation.
- Swipe finger toward the rear to initiate a rear wash. Swipe finger toward the rear again to initiate oscillation. To cancel the oscillation, swipe the same direction again.



Operations

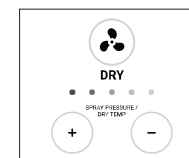
Automatic Wash/Dry

- Press AUTO WASH/DRY to initiate an automatic washing and drying cycle.
- The bidet seat will perform a 90 second rear wash with oscillation at level 4 spray pressure, then stop, then perform a 2 minute drying cycle, then stop



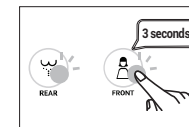
Dry

- Press the DRY button to start a drying cycle.
- Use the + and - buttons to adjust the drying temperature during the cycle.



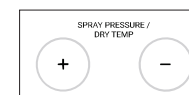
Pulse Mode

- During an active wash cycle, press and hold the same wash button again for 3 seconds to initiate a pulse spray. Press and hold for 3 seconds again to deactivate pulse.
- Pulse spray will fluctuate the water pressure from low to high, creating a soothing, stimulating wash experience.



Water Pressure Adjustment

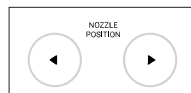
- During any active wash cycle, press the + button to increase the spray pressure and the - button to decrease it.
- There are 5 levels of adjustment.



Operations

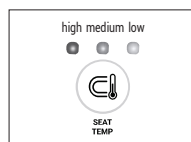
Nozzle Position

- During any active wash cycle, press the [left arrow] button to move the nozzle backward or press the [right arrow] button to move it forward.
- There are 5 positions of adjustment.



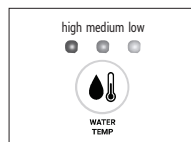
Seat Temperature

- Press SEAT TEMP to cycle through the heated seat settings: Off-->Low-->Medium-->High
- The exact temperature of the heated seat will vary, depending on the environmental factors.
- If the seat is occupied for 15 consecutive minutes in the Medium or High setting, the seat temperature will gradually be reduced to the low setting to prevent "low temperature burns".
- The heated seat uses a low voltage heating element so it may take 5-10 minutes to fully warm up initially.



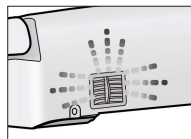
Water Temperature

- Press WATER TEMP to cycle through the heated water settings: Off-->Low-->Medium-->High
- The exact temperature of the heated water will vary, depending on environmental factors.
- Thanks to its tankless design, the water heater will not use any energy if it's not actively spraying.
- NOTE: At the highest spray pressure settings, the bidet seat will output a larger volume of water and the temperature of spray may be reduced.



Deodorizer

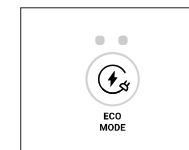
- The deodorizer turns on automatically when a user sits down and the fan will continue to run for 1 minute after leaving the seat.
- The deodorizer cartridge can be cleaned with a brush if you find it losing effectiveness and should be replaced roughly every 12 months.



Operations

Eco Mode

- Press ECO MODE to toggle the energy saving modes: Off->Mode1->Mode2
- If you want your seat to be consistently heated at all times, turn ECO MODE off.



Eco Mode 1

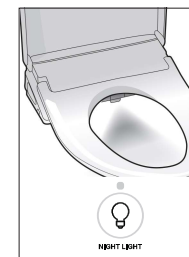
The heated seat temperature will be reduced by 10-15 degrees when idle. Once a user sits down, the seat temperature will climb back to the desired setting.

Eco Mode 2

The heated seat will turn off completely and the LED nightlight will reduce its brightness when the seat is idle. Once a user sits down, the heated seat and LED nightlight will return to their desired settings.

LED Night Light

- Press the NIGHT LIGHT button to cycle through the various LED colors to suit your preference.
- To turn the LED off, keep pressing NIGHT LIGHT button until the light turns off.



PARTY MODE™

- Press and hold NIGHT LIGHT for 3 seconds to start a 30 second disco show. For best results, activate before a guest uses the bathroom and leave the lid up!

Factory Default Reset

- To reset the bidet seat back to its factory default settings, select the stop button 4 times within 2 seconds to clear all current settings.
- A factory reset can only be performed when the seat is not occupied.
- A tone will be heard to confirm that the bidet seat has been initialized.



Operations

Nozzle Cleaning

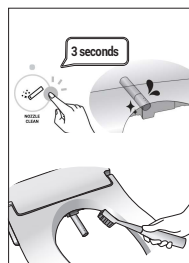
There are two nozzle cleaning modes:

Mode 1 - Nozzle body cleaning

Press NOZZLE CLEAN while nobody is seated and the nozzle will begin a 3 round self-cleaning program. Press STOP at any time to cancel the process.

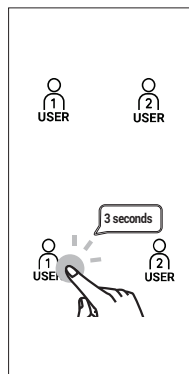
Mode 2 - Nozzle tip cleaning

- Press and hold NOZZLE CLEAN while nobody is seated for 3 seconds to begin a 40 second, nozzle top focused, self-cleaning program. After the self-cleaning, the nozzle will remain extended for 5 minutes so you can clean it with a toothbrush if you desire.
- Anytime during the 40 second self-cleaning program, press NOZZLE CLEAN again to cancel the program and extend the nozzle for manual brushing.
- Press STOP at any time to cancel the self-cleaning program or to retract the nozzle.



User Presets

- You can program your preferred settings for two users. Follow the steps below to program and use the memory function.
- Water temperature, seat temperature, spray pressure, and nozzle position settings can be stored.
- To save a preset, begin a wash cycle and dial in your preferred setting. Then, press STOP to end the wash. Then press and hold one of the user preset buttons for 3 seconds until you hear a confirmation melody.
- To use a preset, press the desire user preset button before you begin a wash cycle, then start the wash.



Operations

Quiet Mode

- The seat will make a 'beep' sound with each button press of the remote control to confirm communication.
- To turn these 'beeps' on or off, using the remote control press simultaneously and hold STOP and "-" for 2 seconds. ("-" is the minus button to decrease spray pressure)

Remote Control Back Light

- The remote control's back light allows users to successfully operate the remote control at night, without needing to turn on the bathroom lights.
- To turn the back light on or off, using the remote control press simultaneously and hold STOP and NIGHT LIGHT for 2 seconds.

Seat Sensor Bypass

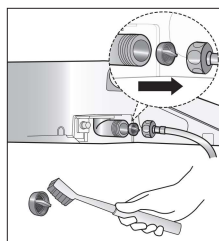
- The bidet seat will not spray or dry unless someone is seated. In certain situations, it may be necessary to bypass the seat sensor so it will spray without direct skin contact.
- To turn the seat sensor bypass on or off, using the remote control press simultaneously and hold STOP and SEAT TEMP for 2 seconds.

NOTE: if the seat sensor is bypassed, the seat will behave as though someone is seated. This will prevent certain functions that require nobody being seated from functioning (i.e. Nozzle Cleaning)

Maintenance

Cleaning The Screen Filter

- Turn off the water supply and hold the toilet flush lever down to empty the tank completely.
- Unplug the bidet seat, remove from the toilet and disconnect the bidet hose. You may use the bucket to catch any dripping water from the hose and bidet seat.
- Remove the screen filter from the water inlet with a long-nosed pliers.
- Clean the filter with a toothbrush and re-install it correctly.
- Reconnect the bidet hose and place the bidet seat back. Plug the power cord back and turn the water supply back on. Check for leaks.



Cleaning The Bidet Seat

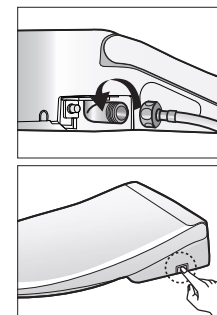
- Do not use bleach, chlorine, ammonia, alcohol or other harsh chemical based cleaning products on the bidet body. Over time, these chemicals will corrode and/or discolor the plastic surfaces and lead to cracks or damages not covered under the warranty.
- To clean, use warm water and mild hand soap and/or a natural disinfectant like diluted vinegar and wipe with a soft towel. If chemical cleaners are used, be sure to immediately wipe down the surface with warm water to remove any residue.



Maintenance

Product Storage

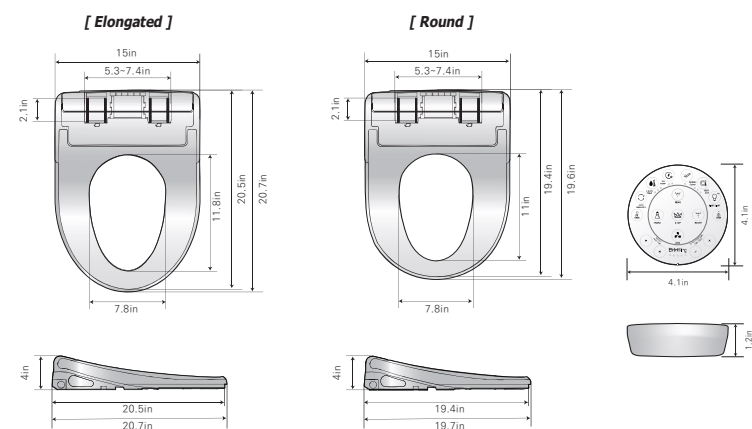
- If the bidet seat will not be used for a long time (over a month) it's a good idea to unplug it from the electrical outlet and disconnect it from the water supply.
- If stored in a very cold/freezing environment, allow it some time to return to normal room temperatures before plugging it in again for the first time.



Specification

Item			BidetKing Crown BKC-EW BKC-RW
Power voltage			120V~ / 60Hz
Max power consumption			1,330W
Power cord			4ft
Supply water connection			Directly connects to the water pipe
Supply water pressure			0.068 ~ 0.735 MPa
Wash	Volume	Rear wash	1L/min±100mL
		Front wash	650mL/min±100mL
		Rear+	800mL/min±100mL
	Pressure control		5 levels
	Temperature control		4 levels (Off, low, middle, high)
	Max heater power consumption		1,300W
	Safety devices		Thermal sensor, Thermal fuse, Thermal switch
	Heated seat	Temperature control	
Max heater power consumption		38W	
Safety devices		Thermal sensor, Thermal fuse	
Dry	Temperature control		5 levels
	Heater capacity		400W
	Safety device		Thermal fuse
Deodorizer			Catalyst Carbon deodorization filter (replaceable)
Incoming water temperature tolerance range			37.4 ~ 95°F (53 ~ 95°F recommended) 37.4 ~ 104°F (50 ~ 95°F recommended)
Usage room temperature tolerance range			37.4 ~ 104°F (50 ~ 95°F recommended) 37.4 ~ 104°F (50 ~ 95°F recommended)
Product dimensions	Elongated		20.7" (l) x 15" (w) x 4" (h)
	Round		19.6" (l) x 15" (w) x 4" (h)

Dimension



WARRANTY

BidetKing warrants that the Crown bidet seat (excluding consumable items) shall be free from defects in material and workmanship under normal use and service.

Crown Residential 3 Year Limited Warranty

- 100% Coverage of all parts and labor for the entire product for the first year from original date of purchase
- 75% Coverage of all parts and labor for the entire product for the second year from original date of purchase
- 50% Coverage of all parts and labor for the entire product for the third year from original date of purchase

Crown Commercial 1 Year Limited Warranty

- 100% Coverage of all parts and labor for the entire product for the first year from original date of purchase
- Warranty may not apply to products that are used for heavy commercial, hospital, or other high-use non-residential applications.

Exclusions and Limitations

1. BidetKing warrants its products to be free from manufacturing defects under normal use and service. This warranty is extended only to the ORIGINAL PURCHASER.
2. BidetKing's obligations under this warranty are limited to repairs or replacement, at BidetKing's option, of products or parts found to be defective, provided that such products were properly installed and used in accordance with instructions. BidetKing reserves the right to make such inspections as may be necessary to determine the cause of the defect.
3. BidetKing is not responsible for the cost of installation, removal, return (shipping) and/or re-installation of products.

This warranty does NOT apply to:

 - Damage or loss which occurs during shipment.
 - Damage or loss which occurs due to the use of improper cleaning chemicals or body lotions/oils which may react with the heated seat.
 - Damage or loss sustained through any natural or man-made causes beyond the control of BidetKing, including but not limited to fire, earthquake, floods, etc.
 - Damage or loss resulting from sediments or foreign matter contained in a water system.
 - Damage or loss resulting from negligent or improper installation including installation of a unit in a harsh or hazardous environment.
 - Damage or loss resulting from removal, improper repair, modification of the product, or improper maintenance including damage caused by chlorine or chlorine-related products.
 - Damage or loss resulting from electrical surges, electrical outages, lightning strikes, or other acts which are not the fault of BidetKing, or which the product is not specified to tolerate.
4. This warranty gives you specific legal rights. You may have other rights which vary from state to state.

THIS WRITTEN WARRANTY IS THE ONLY WARRANTY MADE BY BIDETKING. REPAIR OR REPLACEMENT AS PROVIDED UNDER THIS WARRANTY SHALL BE THE EXCLUSIVE REMEDY AVAILABLE TO THE PURCHASER. BIDETKING SHALL NOT BE RESPONSIBLE FOR LOSS OF USE OF THE PRODUCT OR FOR OTHER INCIDENTAL, SPECIAL, OR CONSEQUENTIAL DAMAGES OR EXPENSES INCURRED BY THE PURCHASER OR FOR LABOR OR OTHER COSTS DUE TO INSTALLATION OR REMOVAL OR COSTS OF REPAIRS BY OTHERS, OR FOR ANY OTHER EXPENSE NOT SPECIFICALLY STATED ABOVE. EXCEPT TO THE EXTENT PROHIBITED BY APPLICABLE LAW, ANY IMPLIED WARRANTIES, INCLUDING THAT OF MERCHANTABILITY, ARE EXPRESSLY LIMITED TO THE DURATION OF THIS WARRANTY. SOME STATES DO NOT ALLOW LIMITATIONS, SO THE ABOVE LIMITATION AND EXCLUSION MAY NOT APPLY TO YOU.

How to Obtain Service

To obtain repair service under this warranty, you must contact the BidetKing Service Center to obtain an RMA (Return Merchandise Authorization) number. Proof of purchase in the form of a copy of the original receipt must be provided for the warranty to be valid. Take or ship the unit pre-paid to the BidetKing authorized service center along with the RMA number and proof of purchase. To contact the BidetKing Service Center, please email support@bidetking.com.



support@bidetking.com