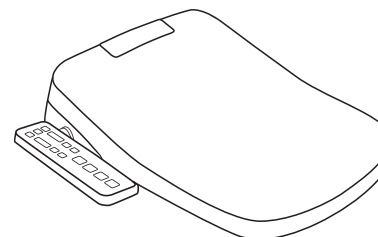




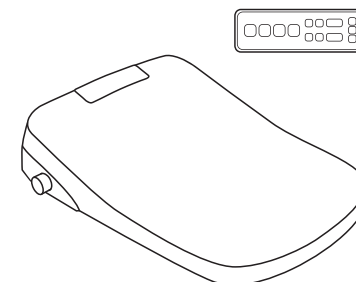
- Thank you for purchasing the WLJBIDET smart bidet toilet seat.
- Please ensure that you read the instruction manual prior to using the product and store it in a secure location for future reference.

Instruction Manual

SMART BIDET TOILET SEAT



S7L
(Panel Control)



S70L
(Remote Control)



ATTENTION

- When installation, please make sure to open the water supply valve first, wait 3-5 minutes for the water to fill the bidet, then plug it.
- When the power is activated the LED light will start to blink, the spray bar will automatically extend (without spray) and the water will flow down the bar into the toilet. This is the unit performing a water spray check.
- Stop blinking the LED light (blue night light): If the LED light blinks continuously for more than 5 minutes, please unplug the bidet and turn off the water valve. Turn on the water valve first, wait 3-5 minutes, then plug it and do not operate any functions. The blue light will stop blinking in 1 minute.





TABLE OF CONTENT



Safety Precautions	01
Parts Names	05
Installation	06
Trial Operation	09
Operation	10
Maintenance	13
Idle Unit	14
Trouble Shooting	15
Technical Parameter	17

■ Safety precautions

Be sure to carefully read this "Safety Precautions" document before beginning installation.

Please comply with all safety warnings and cautions!

Symbol	Meaning
 Warning	Warns you how to avoid causing personal injury.
 Caution	Indicates that there are actions you must follow or avoid to prevent damage to this unit or other items.
	This symbol indicates prohibition.
	This symbol indicates mandatory compliance.
<ul style="list-style-type: none"> ● This product is classified as Class I unit and must be grounded. ● Individuals with physical or intellectual disabilities (including children) need to use this product under adult supervision. Patients with heart disease should use it with caution. ● When installing, new hose components and other accompanying components should be used. Old hose components cannot be reused, otherwise it may cause water leakage. 	

 WARNING	
	<p>Only use the power supply specified: AC 110V-120V, 1300W, 60Hz.</p> <ul style="list-style-type: none"> • Not following the power supply specified may lead to unit failure, burns, electrocution, fire, or other personal injury hazards.
	<p>Ensure that the water supply valve, water supply hose, and 3-way valve do not come into contact with the power cord connector.</p> <ul style="list-style-type: none"> • Condensation or water leakage may cause fire, electric shock, heat or short circuit.
	<p>Do not touch the power cord connection with wet hands.</p> <ul style="list-style-type: none"> • Doing this may result in electrical shock.
	<p>Do not insert any objects into the warm air outlet or cover it with any items, including clothing.</p> <ul style="list-style-type: none"> • Doing this may result in fire, electrical shock, burn, short circuit, or breakdown.
	<p>Avoid pouring water or detergent on the unit body or power plug.</p> <ul style="list-style-type: none"> • Doing this may result in fire, electrical shock, overheating, or short circuit. • Doing this may result in injury or water damage.
	<p>Do not attempt to disassemble, repair, or modify the unit yourself.</p> <ul style="list-style-type: none"> • Doing this may result in fire, electrical shock, overheating, short circuit, or breakdown.

WARNING

Avoid sitting on the heated toilet seat for extended periods.

- Doing this may result in low-temperature burns.
- The guardian should turn off the toilet seat heating function to prevent the following persons from being scalded by the low temperature during use:
 - Children, the elderly and other users who are unable to adjust the temperature themselves.
 - Patients and individuals with physical disabilities who have limited mobility.
 - Individuals who consume medications that induce drowsiness (such as sleeping pills and cold medicines), those who consume excessive amounts of alcohol, individuals experiencing severe fatigue, and others who are prone to falling asleep should exercise caution.

Do not install the unit on mobile vehicles, such as caravans or ships.

- Doing this may result in fire, electric shock, short circuit or malfunction.
- The bidet toilet seat, lid, main unit, or other parts may become loose and fall off, which could result in injury.

If a malfunction occurs, do not use the unit.

- In case of breakdown or other problems, make sure to turn off the power by flipping the power switch to OFF. And close the water shutoff valve to stop the water supply.
- Continued use after a malfunction could result in fire, electric shock, heat, short circuit, injury, or water damage.
- The following are possible malfunctions:
 - Water is leaking from a pipe or the main unit.
 - The unit is cracked or broken.
 - The unit makes a strange noise or emits a strange odour.
 - The unit emits smoke.
 - The unit is abnormally hot.
 - The toilet seat cushion is out of place.

Only use water that is allowed by the laws and ordinances of the region of use.

Do not use seawater or recycled water. Potable water only.

- The use of non-potable water can cause various issues such as clogged bidet nozzles, frequent filter replacements, skin irritation from splashing water, or appliance malfunction.

Do not damage the power cord in any way. Avoid striking, yanking, twisting, excessively bending, altering, binding, pinching, or heating the power cords.

Additionally, do not place anything heavy on them.

- Using a damaged power cord can result in fire, electric shock, heat, or short circuits. Therefore, it is important to avoid doing anything that could damage or reduce the life of the power cord.

Do not touch the power cord during thunderstorms.

- Doing this may result in electrical shock.



WARNING

Do not dispose of lit cigarettes or any other combustible materials in the bidet toilet seat.

- Doing this may result in a fire.

Do not cut the power cord.

- Doing this may result in fire, electric shock, short circuit or malfunction.

Other situations may result in fire, damage to unit, or personal injury:

- Do not use the unit if the power cord or power connection parts are damaged.
- Do not block the unit's ventilation openings.
- Do not operate the unit while drowsy or under the influence of drugs or alcohol.
- Do not insert or remove anything from any openings or hoses.
- Do not use aerosol (spray) products near the unit as they may cause corrosion or leave marks on the casing.



To reduce the risk of burns, electric shock, fire or other injuries:

- Close supervision is necessary when children, the elderly or individuals with disabilities are using the unit.
- This unit must only be used for its intended purpose as described in this manual or on the sales website.

This is an electrical unit. Do not install it in areas where water may come into contact with the unit or in areas with high humidity levels that may cause water to condense. If using the product in a bathroom, ensure good air flow by installing a fan or ventilation port.

- Not following these instructions may cause fire, electric shock, short circuit, or unit failure.
- Connecting to the hot water supply can cause burns and damage to unit.



Please ensure that the power cord is correctly connected.

- To avoid fire, overheating or short circuit, it is important to observe local laws and regulations when installing the unit.

Only use accessories recommended by the manufacturer.

- Keep the power cord away from hot surfaces.
- Connect the unit only to a properly grounded power supply unit.

To avoid danger, have the manufacturer's repair department or equivalent specialist replace a damaged power cord. Before performing any maintenance or inspection, ensure that the power supply is turned off.

- Not following these instructions may cause fire, electric shock, short circuit, or unit failure.

⚠ CAUTION

If the unit is not to be used for an extended period of time, close the water supply valve and drain all water from the main unit, pipe and hose. When using the unit again, allow the main unit, pipe and hose of the unit to fill with water and then use the cleaning function several times to drain off the water.

- Otherwise, the water in the main unit, pipes and hoses may be contaminated, causing skin irritation or other problems.
- Otherwise it may cause fire or overheating when the power is turned on.

If the unit wobbles after installation, do not use it.

- Doing this may cause the unit to come loose and fall, resulting in injury.

If the unit is damaged, do not touch the damaged area.

- Doing this may result in electric shock or injury.

Do not apply excessive force, mechanical shock, step on, or stand on the toilet seat, lid or accessories.

- Doing this may result in breakage or the unit coming loose and falling, causing injury.

Do not lift the unit by the toilet seat, lid or accessories.

- Doing this may cause the unit to come loose and fall, resulting in injury.

To clean the plastic parts (main unit, etc.) or the water supply hose, use a neutral detergent diluted with water. Do not use Toilet cleaners, Household cleaners, Benzene, Paint thinner, Powdered detergents or Nylon scrubbing brushes.

- These items may damage or crack the plastic and cause injury or malfunction.
- These items may damage and corrode water pipes and cause leaks.

Do not install or remove the water filter with the water supply valve open. When installing the water filter, ensure that it is securely tightened in the correct position.

- Failure to do so may result in water leakage or splashing.

Do not fold, crimp or cut the water supply hose and pipe with a sharp object.

- Doing this may result in a water leak.

Do not use fixing plates other than those supplied.

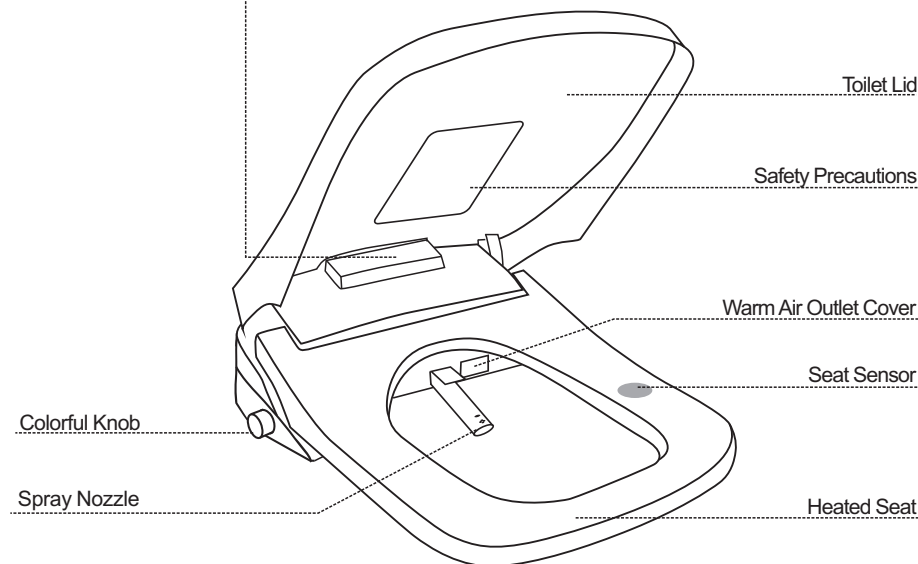
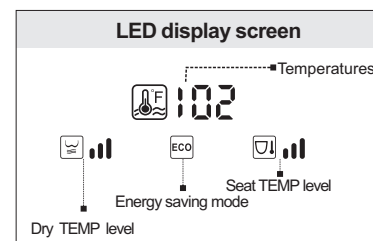
- Doing this may cause unit damage.

In the event of a water leak, turn off the water supply valve immediately.

If the ambient temperature is likely to drop to 32°F or below, prevent pipes and hoses from freezing.

- Frozen water pipes can cause the unit and pipes to break, resulting in a water leak. The following are solutions to prevent frozen pipes:
 - Regulate the room temperature to prevent pipes and hoses from freezing during the cold months.
 - Close the water supply valve and drain all water from the main unit, pipe and hose.

■ Parts Names



<p>Fixing plate (At the bottom of the unit)</p>	<p>DMT pipe</p>	<p>15/16" (7/8") 1/2" 15/16" (7/8") Three-way valve</p>	<p>Filter</p>
<p>Metal adjustment sheets</p>	<p>Rubber expansion screw set</p>	<p>Remote control</p>	<p>Retaining clasp</p>

■ Installation

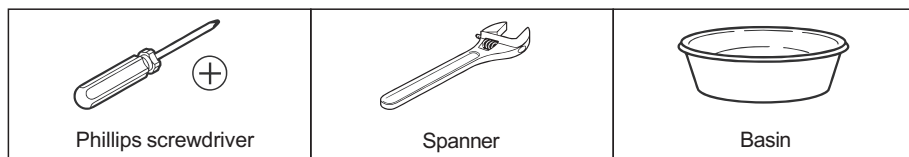


Caution

Precautions before installation

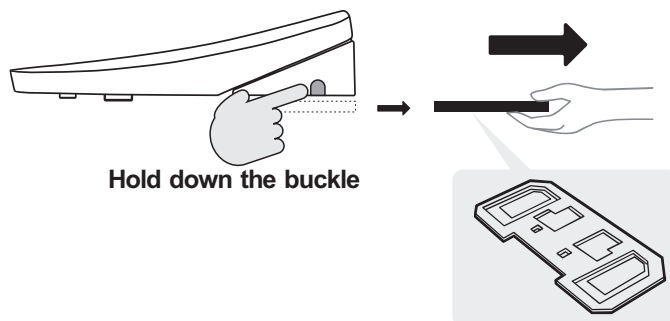
1. Ensure that the inlet water pressure range is between 0.05-0.75Mpa.
2. Always use the accessories and components in the package.
3. To avoid malfunction, do not turn on the power until the installation is complete and the bidet has been filled with water.

Required tools

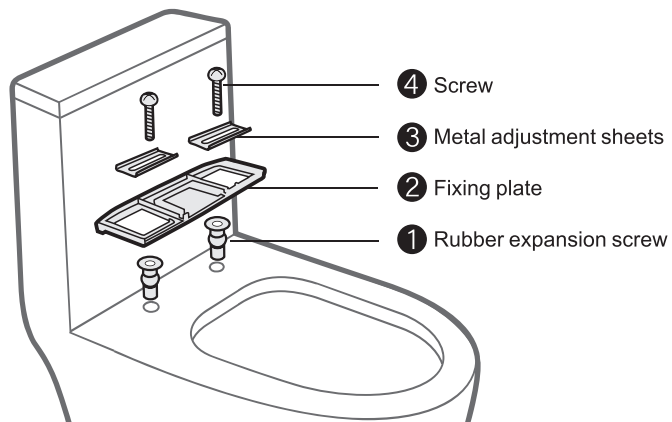


Fixed accessories installation

- 1 Remove the fixing plate from the smart bidet toilet seat.



- 2 Install the accessories according to the diagram.



■ Installation

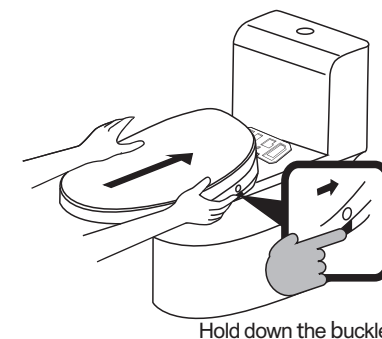
- a. Remove the original toilet seat and fixing fittings and clean the bolt holes and toilet bowl of stains.
- b. Press the rubber expansion screws firmly into the toilet bolt holes. Align the fixing plate and metal adjustment sheets with the bolt holes. Then, tighten the screws.

Tips: To make it easier to press, soak the rubber expansion screws in hot water. (If they still cannot be pressed, use a screwdriver to poke them into the bolt holes, caution should be exercised when using this method as it may damage the internal threads.)

Bidet toilet seat installation

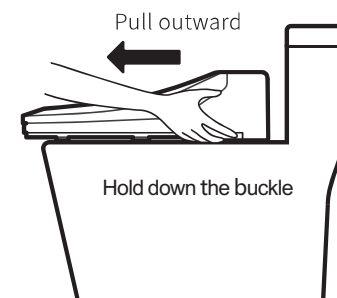
- 3 Hold down the buckle and align the bidet toilet seat to both sides of the fixing plate. Push in the direction of the arrow.
- 4 After installing the bidet toilet seat, ensure that it is properly aligned with the front of the toilet.

- If you are unable to push the bidet toilet seat in to secure it on the toilet, slightly loosen the screws on the fixing plate.
- If the bidet toilet seat is longer (or shorter) than the front of your toilet, go back to step 2 and loosen the screws to move the fixing plate closer to (or away from) the toilet tank. Tighten the screws and reinstall the bidet toilet seat. Repeat this step until the bidet toilet seat aligns with the front of your toilet.



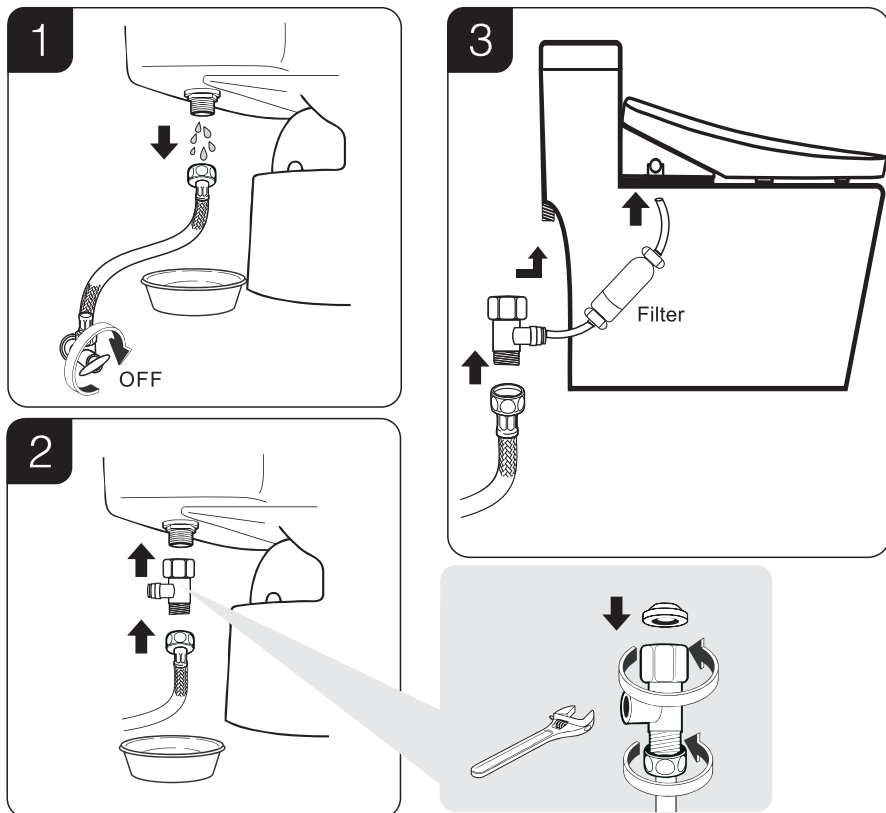
Bidet toilet seat demolition

- 5 Before removing the bidet toilet seat from the fixing plate, unplug the power cord and DMT pipe. Then, hold down the buckle to dismantle it.



■ Installation

Connection of water pipe and hose



- 1 Close the water supply valve and drain the toilet water tank.
- 2 To avoid getting your floors or shoes wet from residual water, place a basin, rag, or mop under the toilet tank.
- 3 Insert the black rubber ring into the 3-way valve and screw it on the inlet of the toilet tank. (Avoid using raw material tape or waterproof tape on the inlet as it may prevent the rubber ring from sealing the gap and cause water leakage.)
- 4 Connect the smaller end of the three-way valve to the DMT pipe. (The DMT pipe was connected to the three-way valve.)
- 5 Secure the other end of the DMT pipe to the inlet hole of the bidet toilet seat using the retaining clasp (blue semi-circular loop).
- 6 Turn on the water supply valve to fill the bidet toilet seat with water. Wait for 3-5 minutes. Please check all connections for leaks while waiting.
- 7 Insertion of the plug. (Ensure the bidet toilet seat has been filled with water for 3-5 minutes before this step, otherwise the LED blue night light from blinking.)
- 8 Congratulations! The installation has been completed successfully.

■ Trial operation



1. Please make sure to open the water supply valve first, wait 3-5 minutes for the water to fill the bidet, then plug it. Otherwise the LED light will blink as a reminder.
2. Operate the unit without the blue LED night light blinking. If the blue LED night light continues to blink, wait for 3 minutes or refer to the trouble shooting section for assistance.

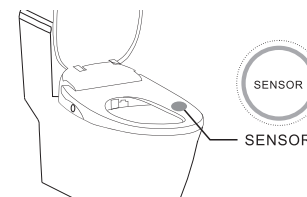


Caution

- Ensure that the plug is inserted into a grounded outlet and placed in a location where it is not susceptible to water splashes.
- Although the temperature may feel comfortable at first, sitting on the heating seat or using the warm air drying for an extended period of time can cause it to become increasingly hot, potentially resulting in low-temperature burns. It is advisable to turn off or lower the temperature as needed.

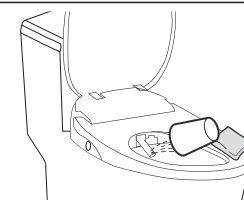
1. Human Seat Sensor

The illustrated area is the seating sensor area. The water spray function is only available when the unit sensed objects, except in Kids mode. To test the basic functions of the bidet toilet seat, you can simulate human seating by covering the seat sensing area with your palm or a damp towel.



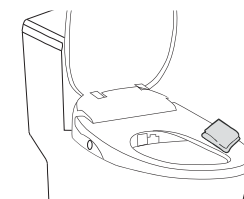
2. Checking the spray function

To test the water spray function, press the 'Hip Wash' or 'Wash Woman' button when seated. Press the button again to test the oscillating wash function.



3. Check the drying function

To test the warm air drying function, press the 'drying' button while seated. To test the warm air temperature function, press the 'drying temperature' button while drying.



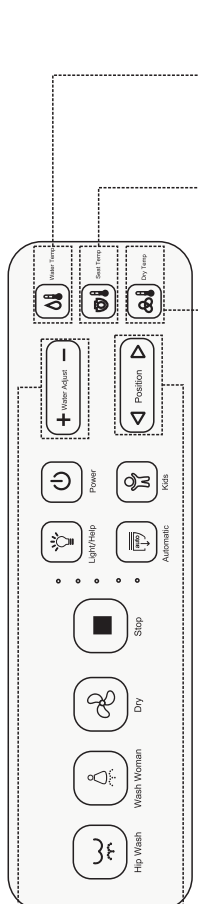
■ Operation

Note:

If the remote control you received is not functioning properly, please follow the instructions below to pair it.

Press and hold the side knob for 5 seconds until you hear a beep and the screen starts flashing, press any button on the remote control and then hear the beeping sound, indicating successful pairing.

■ Operation



Water Temp
Press the button to adjust the water temperature according to your preference during water spraying. There are 4 levels to adjust:

- One light indicator -- Turn off warm water function
- Two light indicator -- Low
- Three light indicator -- Middle
- Four light indicator -- High

Seat Temp
Press the button to adjust the seat temperature according to your preference. There are 4 levels to adjust:

- One light indicator -- Turn off heated seat function
- Two light indicator -- Low
- Three light indicator -- Middle
- Four light indicator -- High

Dry temp
Press the button to adjust the warm air temperature according to your preference during drying. There are 5 levels to adjust:

- All indicator lights are off -- Turn off warm air drying function
- One indicator light -- Level 1
- Two indicator light -- Level 2
- Three indicator light -- Level 3
- Four indicator light -- Level 4

Nozzle position
Press this button to adjust the water position during cleaning. There are 4 adjustable levels: forward 2nd gear adjustment and backward 2nd gear adjustment.

Water pressure
Adjust the water pressure of the spray during cleaning by pressing the '+' - '-' button. There are 5 levels of water pressure.

■ Operation



■ Hip Wash

When seated, press this button to spray water towards the rear area of you.

- Press the button again to activate the oscillating washing function, which will move the nozzle back and forth for a more pleasant experience.



■ Wash Woman

When seated, press this button to spray water towards the front area of women.

- Press the button again to activate the oscillating washing function, which will move the nozzle back and forth for a more pleasant experience.



■ Dry

When seated, press this button to dry for 5 minutes (3 minutes will suffice).

- During this time, adjust the warm air temperature by pressing 'Dry Temp'.
- To prevent burns, do not only use high-temperature drying throughout the entire process.
- Stop drying when you stand up or press 'Stop'.



■ Automatic

Press this button to initiate automatic cleaning and drying function.

- The cleaning process is as follows: wash the hip for 30 seconds, then clean it by oscillating for 30 seconds, and finally dry it for 3 minutes.
- Press the 'Wash Women' button before 'Automatic' to automatically clean the front area for women.



■ Kids

This function is designed for children.

- The cleaning process is as follows: wash the hip for 15 seconds, then clean it by oscillating for 15 seconds, and finally dry it for 2 minutes. (The water pressure is lower than that in the adult mode).
- This function will still work even if the child's body is not in the seat sensor area.



■ Stop

Pressing this button will stop all currently operating functions.



■ Light / Help

- Not in seated: Pressing the button activates the LED night light, which turns off when pressed again. The night light enables men to urinate standing up at night without turning on a bright light.
- In seated: Pressing this button activates the turbo flush function, which produces intense water to assist individuals with constipation in their bowel movements.

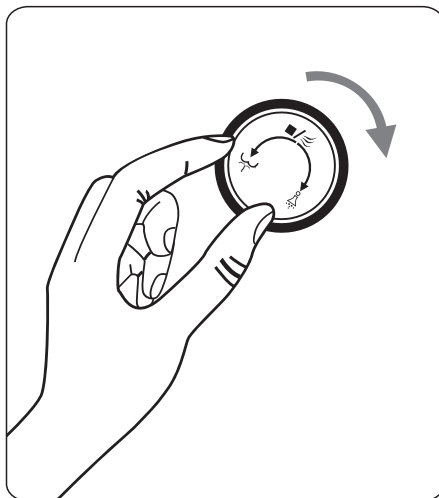


■ Power

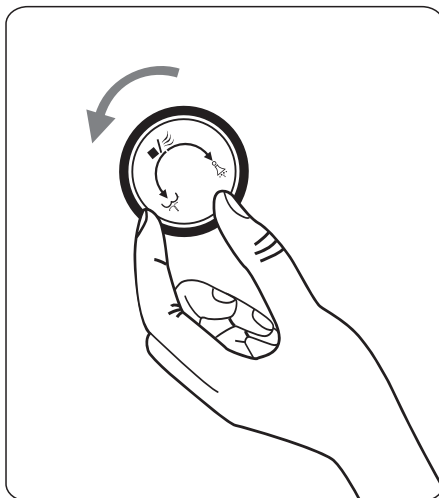
Press the button to activate the 8-hour ECO mode, which will reduce energy consumption. In ECO mode, seats are not heated when not in use.

- The ECO mode will turn off automatically after 8 hours or when using the bidet toilet seat.
- To turn off the bidet toilet seat, press and hold the button.

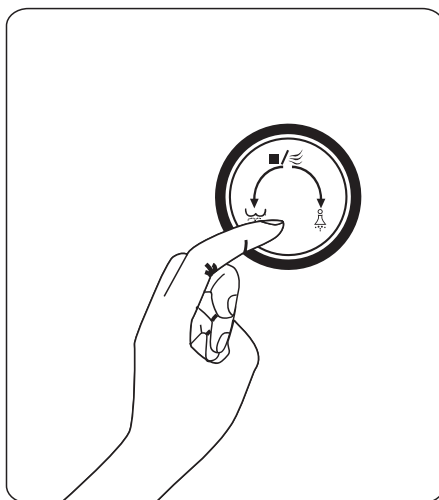
■ Colorful side knob (S70L)



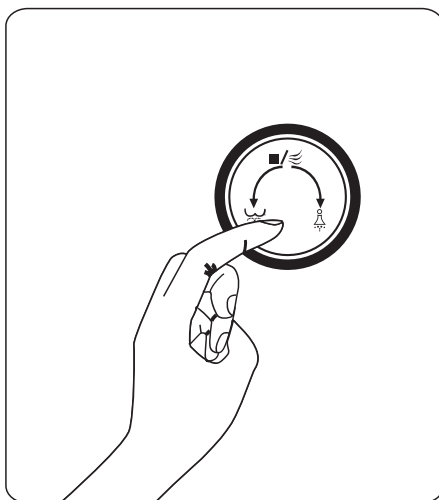
When seated, turn the knob in the direction of the arrows to clean the front area of the woman. To initiate oscillating cleaning, dial the knob twice.



When seated, turn the knob in the direction of the arrows to clean the rear area. To initiate oscillating cleaning, dial the knob twice.



When seated, press the knob once to start the drying process and again to finish it in 3 seconds.



Stop all currently operating functions.

■ Maintenance

Unit cleaning

- Clean the surface with a damp, soft cloth.
- To clean stubborn dirt, use a diluted detergent. Avoid using acidic or alkaline detergents, stain removers, petrol diluent, benzene or any other cleaning products.
- Failure to wipe off any urine from the product in a timely manner may result in pink or teal stains on the unit.



Cleaning Agent



Petrol Diluent



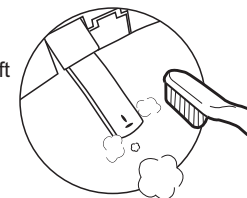
Insecticide



Sandpaper

Nozzle cleaning

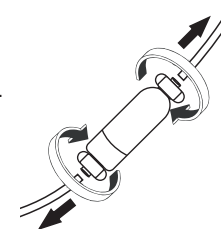
1. Please clean the nozzle regularly. Press the "Hip Wash" or "Wash Woman" button when not seated and clean with a toothbrush or soft cloth after the nozzle is extended.
2. Please do not pull the nozzle too hard. After finishing cleaning, press the stop button so that the nozzle will retract automatically.



Filter Installation

Filter Replacement

1. Turn off the water supply valve and power. To avoid getting your floors or shoes wet from residual water, place a basin, rag, or mop under the filter.
2. Loosen both sides of the filter and unplug the connecting pipe on both sides of the filter.
3. Replace the current filter with a new one and trim the DMT pipe as needed.
4. Insert the connection tube into the corresponding port of the filter and tighten the ends to secure it.
5. Open the water supply valve and wait 3-5 minutes, please check all connections for leaks while waiting.
6. Turn on the power. (Ensure the bidet toilet seat has been filled with water for 3-5 minutes before this step, otherwise the LED blue night light from blinking.)



Water Filter

Consumable parts

The water filter should be replaced every 4-6 months, depending on the quality of the water.



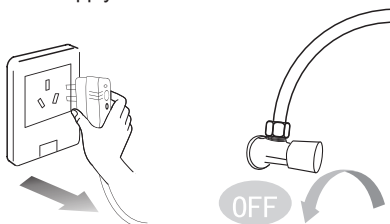
Water Filter

■ Non-use over a long period

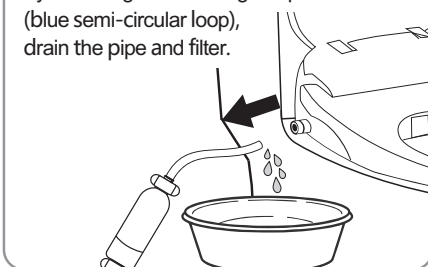
■ In the following cases, turn off the water inlet valve and power supply, and drain the water from the hose and bidet toilet seat tank:

1. In cold areas, water may freeze.
2. When not in use for an extended period.

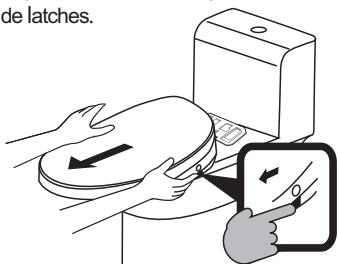
1. Turn off the water valve and power supply.



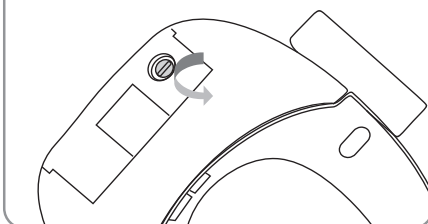
2. Disconnect the DMT pipe by removing the retaining clasp (blue semi-circular loop), drain the pipe and filter.



3. Hold the bidet toilet seat with both hands and pull it outwards while pressing the side latches.



4. Unscrew the drain screw using a screwdriver to drain the water from the bidet toilet seat tank.



- After draining the water, ensure that the drain screw is properly set to prevent any water leakage.
- Please confirm and trial operation when using the unit again.

To prevent DMT pipes and three-way valves from freezing during winter, take the following antifreeze measures:

- Raise the indoor temperature.
- Close the water supply valve.
- Drain the water from the DMT pipe.

■ Trouble Shooting

Type	Trouble	Causes	Solution
LED night light (blue light)	LED night light keep blinking, water does not warm.	<ul style="list-style-type: none"> ● The water's not full in bidet before power on. ● Power outage. 	Unplug the power supply, open the water supply valve and wait for 1 minute, then plug it back in, do not operate any function at this time. After waiting for 2 minutes, the LED night light will not be blinking and the warm water function will return to normal.
Spray	The bidet does not spray water after pressing the cleaning button, but can spray water by pressing the kids button.	Seat not sensing any objects, kids function does not need to sense the object.	Use the palm of your hand or a damp towel(Recommended) to cover the seat sensing area during trial operation .
Spray	Spray nozzle do not oscillate for cleaning.	Only pressed the cleaning button once.	Pressing any cleaning button twice will oscillate cleaning.
Spray	Delayed response to spraying when using the bidet after installation.	When using the bidet for the first time after installation, the spray will be delayed by 5~10 seconds more than normal.	This is normal, not a malfunction.
Flowing water	Water will flow out of the spray lid randomly when not using the unit.	This is the unit automatically regulating the water pressure in the bidet.	This is normal, not a malfunction.
Flowing water	Water will flow down the spray bar into the toilet bowl when using the unit. Also happens before or after spraying.	This is the nozzle self-cleaning.	This is normal, not a malfunction.
Flowing water	Water flows out of the spray lid for more than 1 minute.	/	Unplug the power cord and plug it back in after 10 seconds.

■ Trouble Shooting

Type	Trouble	Causes	Solution
Water temperature	Some cold water before spraying warm water.	Inlet water too cold due to the low temperatures in winter.	Close the water supply valve appropriately to reduce the water flow, and set the water temperature to a high temperature and wait for more than 30 seconds before use.
Water pressure	The water pressure is too low and the inside of the filter is yellow and mouldy.	Filter clogging.	It is recommended to change the filter once every 3-6 months, depending on the water quality.
Water pressure	Water pressure decreases.	Nozzle clogging.	Press any wash button when not seated and lightly brush the nozzle with a toothbrush while the spray bar is extended(not spray). When finished, press any wash button or 'Stop' button to retract the spray bar.
Seat	The seat doesn't feel warm to the touch .	In ECO mode the seat will only start heating when it senses the object.	Switching off ECO mode.
Temperature display	The displayed temperature on the screen does not correspond to the set temperature.	All temperatures have a tolerance of $\pm 4^{\circ}\text{F}$.	This is normal, not a malfunction.
Remote controls	The remote control has power but does not respond when pressed.	Remote control not paired with bidet.	<ul style="list-style-type: none"> Method 1: Press and hold the side knob for 5 seconds until you hear a beep and the screen starts flashing, press any button on the remote control and then hear the beeping sound, indicating successful pairing. Method 2: Long press the remote control 'Stop' buttons and 'Wash Woman' at the same time before the boot state and then hear the beeping sound, indicating successful pairing.
Beep	How do I turn off the beeping sound?	/	Long press the 'Hip wash' button for about 5 seconds to hear a beep, which means the beeper is successfully switched off.

■ Technical parameter

Specification		S7L	S70L
Power Rating		AC 110V-120V, 60Hz, 1300W	
Inlet Water	Inlet Water Temperature	59°F - 95°F	
	Inlet Water Pressure	0.05 - 0.75Mpa	
Wash Device	Adjustable	4 Levels	
	Warm Water Temperature	Actual water temperature, 91°F, 97°F, 102°F	
	Heater	1200W	
	Safety Devices	Negative Temperature Coefficient Sensor, Thermostat, Protection against dry heating	
Heated Seat	Adjustable	4 Levels	
	Temperature	Indoor temperature, 91°F, 99°F, 104°F	
	Heater	45W	
	Safety Devices	Earth leakage protection, Seating Sensor	
Warm Air Dryer Device	Adjustable	5 Levels	
	Dry Temperature Adjustable	Indoor temperature, Level 1, Level 2, Level 3, Level 4	
	Heater	190W	
	Safety Devices	Thermostat, Thermal Cutoff	
Power Cord Length		47.2in	
Ambient Temperature		59°F - 95°F	
Turbo & Vortex Function		√	√
Control Type		Operator Panel Control	Remote Control
Package Dimension		22 x 19.3 x 7.3 in	21.3 x 19.3 x 8 in
Package Weight		23 lb	24 lb