

## ■ Installation

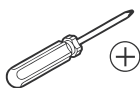


### Caution

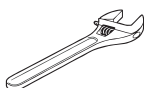
### Precautions before installation

1. Ensure that the inlet water pressure range is between 0.05-0.75Mpa.
2. Always use the accessories and components in the package.
3. To avoid malfunction, do not turn on the power until the installation is complete and the bidet has been filled with water.

### Required tools



Phillips screwdriver



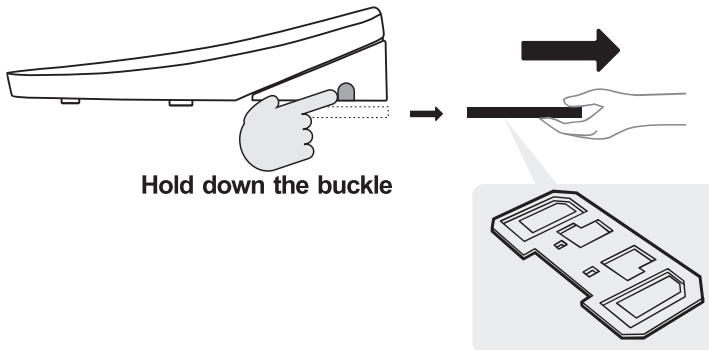
Spanner



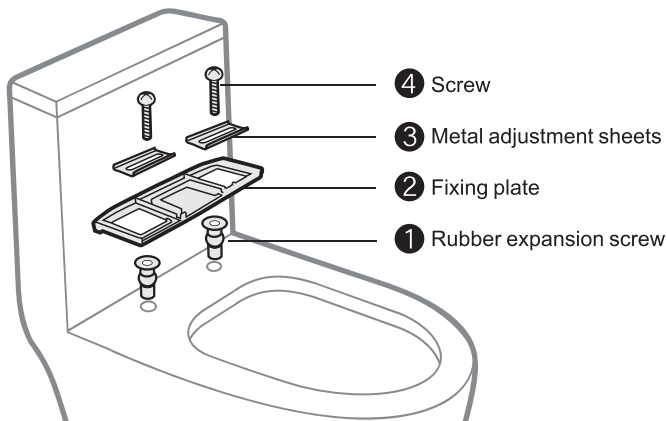
Basin

### Fixed accessories installation

- 1 Remove the fixing plate from the smart bidet toilet seat.



- 2 Install the accessories according to the diagram.



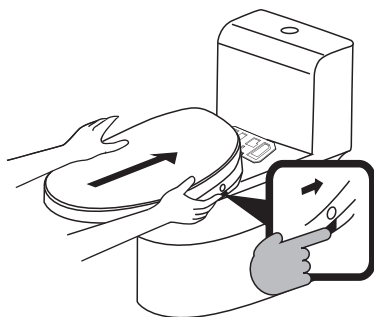
## ■ Installation

- a. Remove the original toilet seat and fixing fittings and clean the bolt holes and toilet bowl of stains.
- b. Press the rubber expansion screws firmly into the toilet bolt holes. Align the fixing plate and metal adjustment sheets with the bolt holes. Then, tighten the screws.

Tips: To make it easier to press, soak the rubber expansion screws in hot water. (If they still cannot be pressed, use a screwdriver to poke them into the bolt holes, caution should be exercised when using this method as it may damage the internal threads.)

### Bidet toilet seat installation

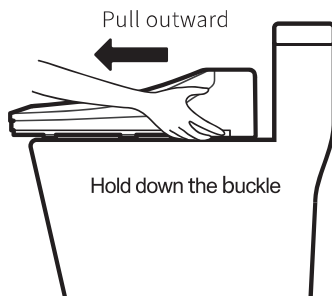
- 3 Hold down the buckle and align the bidet toilet seat to both sides of the fixing plate. Push in the direction of the arrow.
  - 4 After installing the bidet toilet seat, ensure that it is properly aligned with the front of the toilet.
- If you are unable to push the bidet toilet seat in to secure it on the toilet, slightly loosen the screws on the fixing plate.
  - If the bidet toilet seat is longer (or shorter) than the front of your toilet, go back to step 2 and loosen the screws to move the fixing plate closer to (or away from) the toilet tank. Tighten the screws and reinstall the bidet toilet seat. Repeat this step until the bidet toilet seat aligns with the front of your toilet.



Hold down the buckle

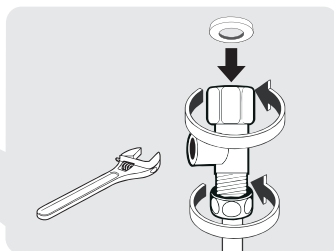
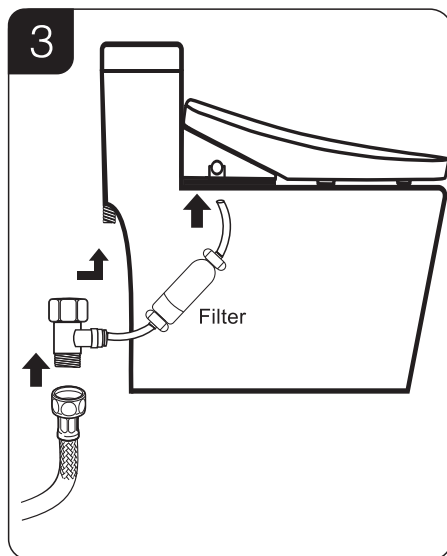
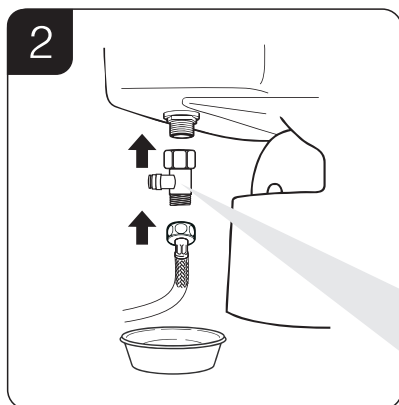
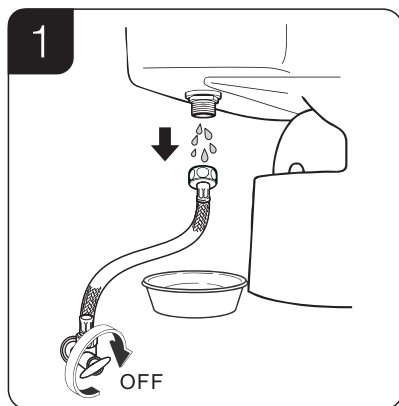
### Bidet toilet seat demolition

- 5 Before removing the bidet toilet seat from the fixing plate, unplug the power cord and DMT pipe. Then, hold down the buckle to dismantle it.



# ■ Installation

## Connection of water pipe and hose



- 1 Close the water supply valve and drain the toilet water tank.
- 2 To avoid getting your floors or shoes wet from residual water, place a basin, rag, or mop under the toilet tank.
- 3 Insert the black rubber ring into the 3-way valve and screw it on the inlet of the toilet tank. (Avoid using raw material tape or waterproof tape on the inlet as it may prevent the rubber ring from sealing the gap and cause water leakage.)
- 4 Connect the smaller end of the three-way valve to the DMT pipe. (The DMT pipe was connected to the three-way valve.)
- 5 Secure the other end of the DMT pipe to the inlet hole of the bidet toilet seat using the retaining clasp (blue semi-circular loop).
- 6 Turn on the water supply valve to fill the bidet toilet seat with water. Wait for 3-5 minutes. Please check all connections for leaks while waiting.
- 7 Insertion of the plug. (Ensure the bidet toilet seat has been filled with water for 3-5 minutes before this step, otherwise the LED blue night light from blinking.)
- 8 Congratulations! The installation has been completed successfully.